

FAMILY HUBS NEWSLETTER

Official Family Hubs Launch:

On 19th January we held the official launch of the Croydon Family Hub. It was opened by Executive Mayor of Croydon, Jason Perry. Local parents, carers, families, and professionals were invited to join the opening event.

Two local authors Laura Henry-Allain, the creator of 'JoJo and Gran Gran' and Tracy Gunaratnam, the creator of 'Preposterous Rhinoceros' and 'Not My Hats' were also at the event, engaging families through storytelling sessions.

There were also healthy eating activities run by the Childrens Centre and the Henry project and a marketplace event with partners, who are currently delivering in the family Hub space, showcasing their services.

Croydon is one of 75 local authorities to be awarded government money to bring together all the support families may need, from pregnancy right through to young people turning 19 years old, (or 25 if they have a SEND) in a 'one-stop-shop' space.

Our Family Hub offers a range of services including parenting advice, antenatal help, health visiting, mental health support, infant feeding support and advice on relationship building, benefits and how to get into work.

Watch this space as we look forward to opening two further Family Hubs in the borough by 2025.

To find out more about Croydon Family Hubs or the Family Hub programme email: Familyhubs@croydon.gov.uk



Parent Carer Panel update:

- Members of the Parent Carer Panel attended the Family Hub launch event, to meet with the Executive Mayor of Croydon, Jason Perry, and other officials including local counsellors.
- The Parent carer panel members told us that they wanted to gain new skills and knowledge. On the 15th of February we held a basic first aid training session at Selhurst Children's Centre. Members of the Parent Carer Panel came along to learn how to help in accident and emergency situations. The feedback was really positive with the parents / carers saying they had learnt a lot.
- Our next Parent Carer Panel will be on 28th March from 11am to 12:30pm, at Croydon Central Library where we will have a meet and greet session with Shelley Davies, Director of Education and Lead for the Family Hub Transformation project.

Would you be interested in coming to our next Parent Carer Panel? We want to hear from you.



SPOTLIGHT

THE HOME LEARNING ENVIRONMENT



Meet Lauren Campbell, our Croydon Family Hubs Early Language, Home Learning Environment and Bookstart Coordinator.

Lauren leads the home learning programme which will provide joint working with parents to support their children's learning in the home at 'no cost, low cost'.

She is working in partnership with health professionals and early years settings to implement the use of ELIM (early language identification measure) which will support the identification of early intervention needs and support to help children to achieve their best outcomes.

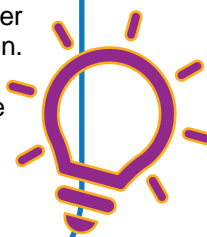
She also works closely with the Book Trust and partners across the borough including libraries and children's centres, health, and registrars to promote the love of books, stories, and rhymes through sharing experiences.

"Through the home learning environment learning can take place anywhere, not just in an early year's setting. Learning happens everywhere and through all experiences, it is a part of our everyday lives."

Lauren is currently running the 'Making it Real' training with the National Children's Bureau. Making it REAL (Raising Early Achievement in Literacy) is an evidence based and award-winning training. The aim of the training is to improve the home learning environment. It will aid in promoting outcomes in all areas of child development with a stronger emphasis on speech, language, communication, and early literacy.

The training is for Early Years Providers, practitioners working with families and wider volunteers in services provided within Croydon.

If this interests you, please contact the Home learning environment team:
lauren.campbell@croydon.gov.uk.



Key Dates:

- Thursday March 28th, 11am to 12:30pm

Parent Carer Panel at Croydon Central Library

COME AND JOIN US

Services delivering out of the Family Hub over the next month

Sexual Health Drop in

– Sexual Health Nurse Seaming Pak has been coming to Woodland's every 2nd Monday of the month from 1pm to 4pm. Offering advice and support with STI Testing, Relationship and Sexual Health information, advice, and guidance and more. You can just walk -in, no appointment necessary.

Department of Work and Pensions

– Gemma Edwards, Employment Adviser from Croydon Job Centre is at the Family Hub every Friday from 10am – 3pm and offers advice on online benefit applications such as universal credit, attendance allowance, housing benefit claims, council tax support, carers allowance, bereavement benefit and new style ESA.

Croydon Healthy Homes

– You can come and speak to a qualified energy advisor, Deborah Dokubo. You can get help with heating your home and managing your energy bills. Drop in on Thursday 28/3/24 from 9.30am – 12 noon



Family Hubs Croydon



@familyhubscroydon



FamilyHubs@croydon.gov.uk



Scan our QR Code

